



1200 THIRD STREET, NE

WASHINGTON, D.C.

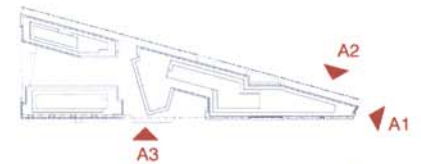


ZONING HEARING EXHIBITS

November 23, 2016 154 PROJECT #45128 ©2016 Shalom Baranes Associates P.C.

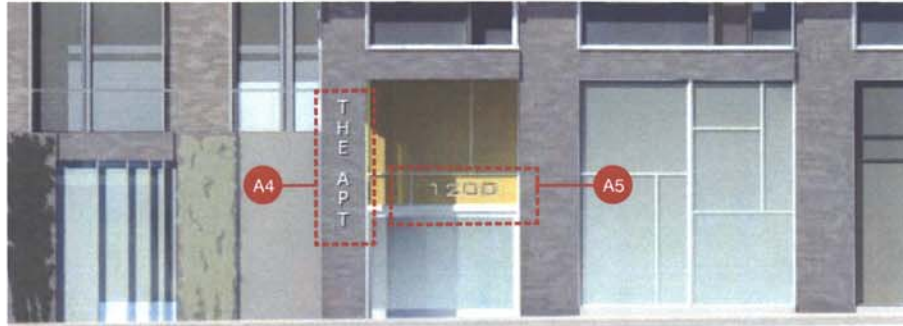
response to op report: RESIDENTIAL SIGNAGE

- A1** MONUMENTAL SIGN AT FLORIDA AVE
Metal Letters in Metal Frame
- A2** MONUMENTAL SIGN AT RAILWAY
Painted Letters on Brick
- A3** MONUMENTAL SIGN AT THIRD ST
Painted Letters on Brick



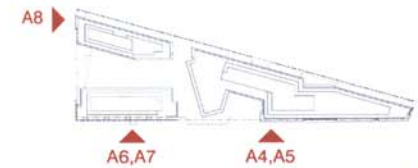
shalom baranes associates architects
Signage Strategies | B.01

ZONING COMMISSION
District of Columbia
CASE NO.16-09
EXHIBIT NO.41



response to op report: RESIDENTIAL SIGNAGE

- A4** APT 1 GROUND LEVEL ENTRANCE SIGN
Metal Letters on Brick
- A5** APT 1 GROUND LEVEL ENTRANCE SIGN
Metal Letters on Glass
- A6** APT 2 CANOPY SIGN
Metal Letters on Metal Canopy
- A7** APT 2 GROUND LEVEL ENTRANCE SIGN
Metal Letters on Stone Panel
- A8** VEHICULAR ENTRANCE SIGN
Metal Letters on Metal Panel



1200 THIRD STREET, NE

WASHINGTON, D.C.

ZONING HEARING EXHIBITS

November 23, 2018 1200 PROJECT #41172 ©2018 Shalom Baranes Associates P.C.

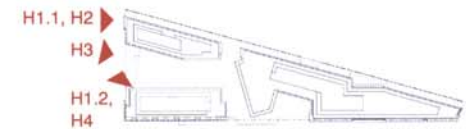
shalom baranes associates architects

Signage Strategies B.02



response to op report: HOTEL SIGNAGE

- H1** MONUMENTAL SIGN AT M STREET
 - Option H1.1: Metal Letters on Composite Concrete Panel
 - Option H1.2: Metal Letters on Precast Concrete Panel
- H2** GROUND LEVEL SIGN AT M STREET
Metal Letters on Precast Concrete Panel
- H3** HOTEL CANOPY SIGN
Metal Letters on Composite Wood Panel
- H4** GROUND LEVEL SIGN AT PLAZA
Metal Letters on Precast Concrete Panel



1200 THIRD STREET, NE

WASHINGTON, D.C.

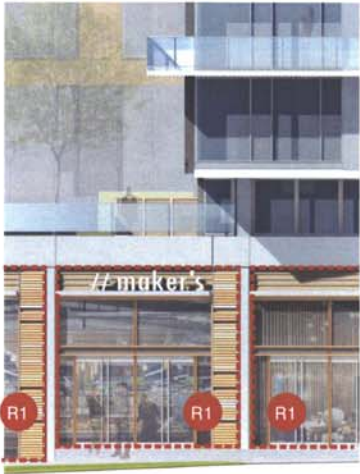
ZONING HEARING EXHIBITS

NOVEMBER 03, 2016 134 PROJECT #43128 ©2016 SHALOM BARANES ASSOCIATES P.C.

shalom baranes associates architects

Signage Strategies B.03

response to op report:
RETAIL SIGNAGE



Note: Ground floor retail bay elevations are illustrative and intended to describe the character and scale for the retail zones. Retail signage may appear anywhere inside retail zones as defined by dashed lines above and in key plan below. Actual retail signage will be developed by individual retail tenants, approved by building owner, and may change over time to accommodate leasing cycles.

